



Medallion House, Joseph Terry Grove,
York, YO23 1FL
£1,250 PCM

 2  1  1  B

****Stylish two bedroom apartment****

This stylish two bedroom first floor apartment is located in the highly sought after complex of York Chocolate Works. Very close to York Knavesmire and the ever popular Bishopthorpe Road area, as well as being walking distance from York City centre.

The property comprises an entrance hallway which leads to a stunning open plan, bright living area and modern kitchen complete with integrated white goods including oven, hob, fridge and freezer, washing machine and dishwasher. The property boasts two spacious bedrooms, one complete with ensuite, as well as a modern three piece bathroom. The apartment also benefits from a private balcony and an allocated parking space.

Perfect for a professional couple or two sharers. This property is finished to a high standard and a viewing is highly recommended.

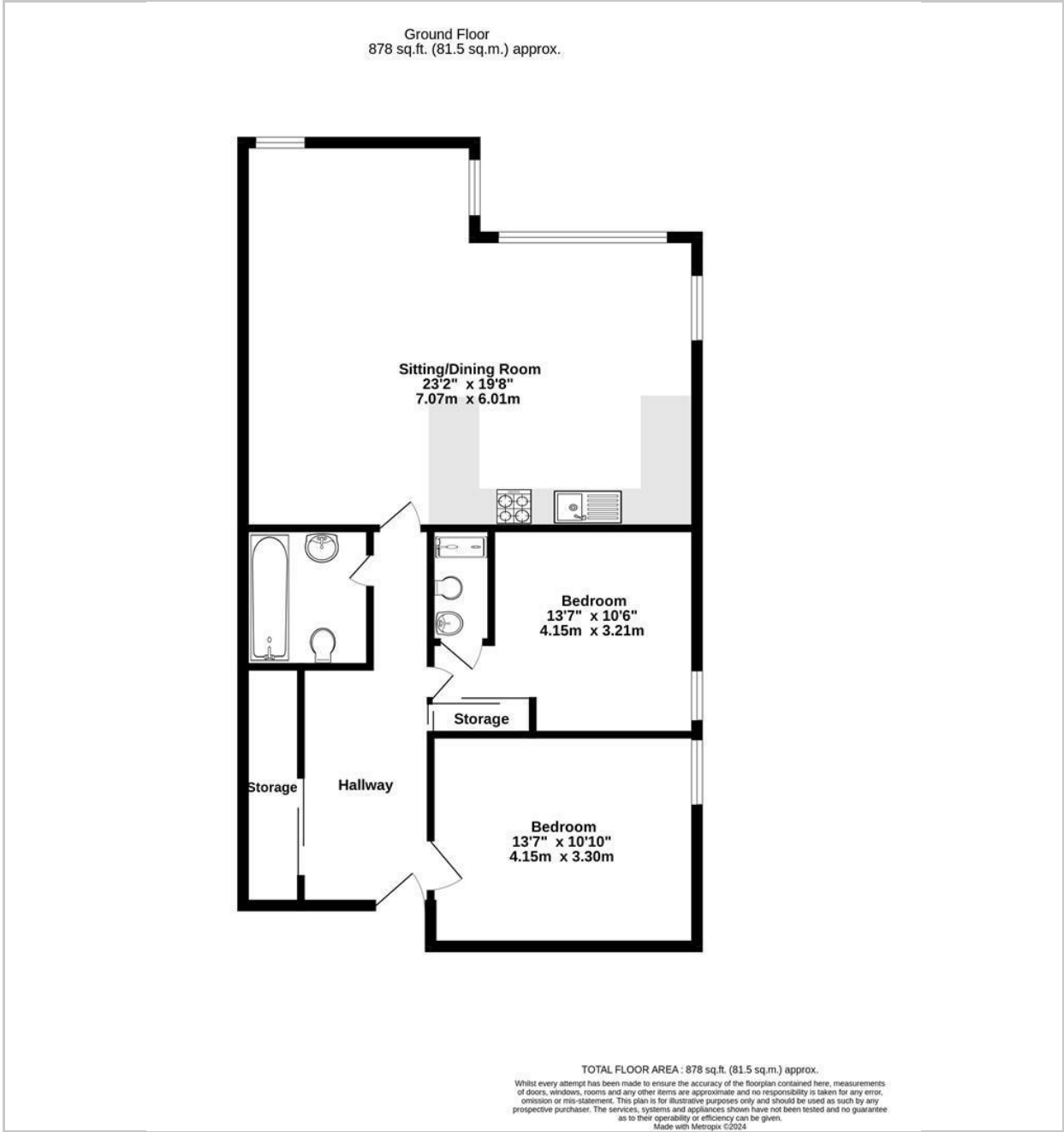
Pets considered on a case by case basis.

Council Tax Band E

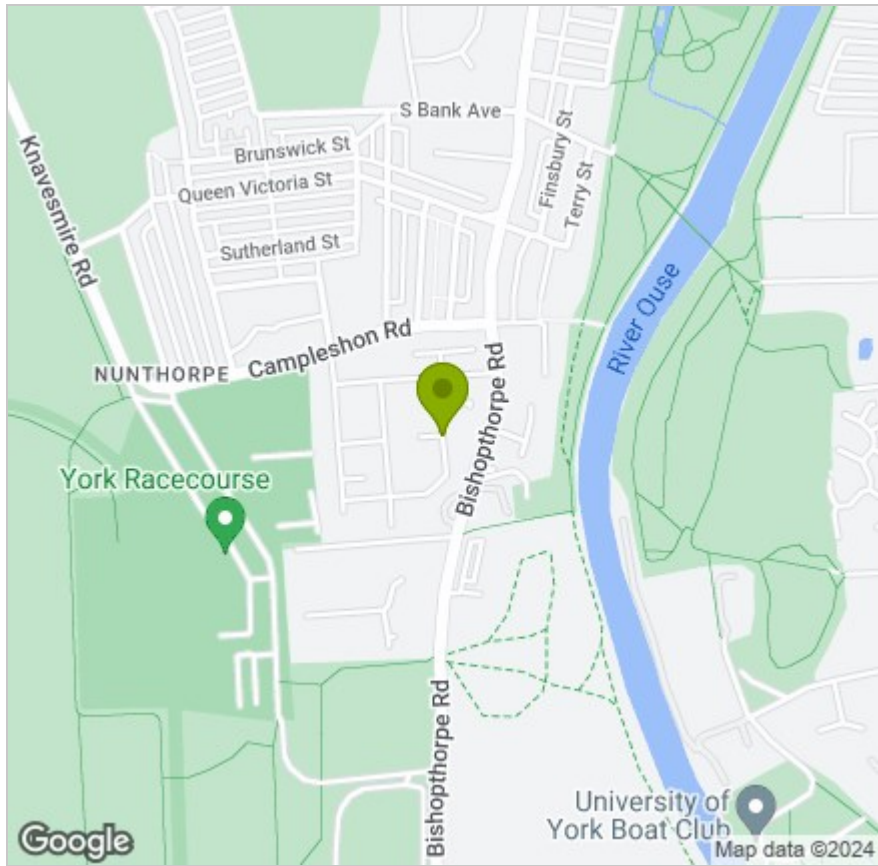
EPC rating B



FLOOR PLAN



LOCATION



EPC

| Energy Efficiency Rating | | |
|---|----------------------------|-----------|
| | Current | Potential |
| Very energy efficient - lower running costs | | |
| (92 plus) A | | |
| (81-91) B | 83 | 83 |
| (69-80) C | | |
| (55-68) D | | |
| (39-54) E | | |
| (21-38) F | | |
| (1-20) G | | |
| Not energy efficient - higher running costs | | |
| England & Wales | EU Directive 2002/91/EC | |

These particulars, whilst believed to be accurate are set out as a general outline only for guidance and do not constitute any part of an offer or contract. Intending purchasers should not rely on them as statements of representation of fact, but must satisfy themselves by inspection or otherwise as to their accuracy. No person in this firms employment has the authority to make or give any representation or warranty in respect of the property.